

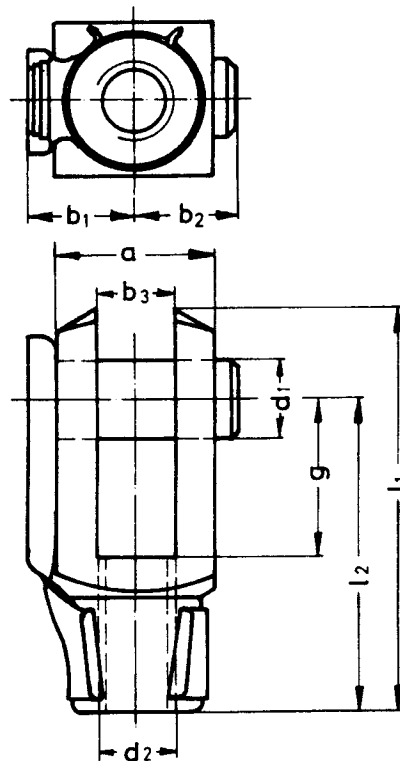


FORK ENDS

12

Product group

Type **Z GA**



Type Z GA K 030 to Z GA K 140 A01

Type	Z GA K							
Size	030	040	050	060	080	100	120	140
a	8	8	10	12	16	20	24	27
b ₁	5.5	5.5	6.5	8	10.5	13	15	16.5
b ₂	5.5	5.5	7	8	11	13	16	17.5
b ₃	4	4	5	6	8	10	12	14
d ₁	4	4	5	6	8	10	12	14
d ₂	M3	M4	M5	M6	M8	M10	M12	M14
g	8	8	10	12	16	20	24	28
l ₁	21	21	26	31	42	52	62	72
l ₂	16	16	20	24	32	40	48	56

Standard phosphate finish.
DIN 50 942
(alternatives available).

Dimensions without guarantee - Modifications reserved.

9505/90