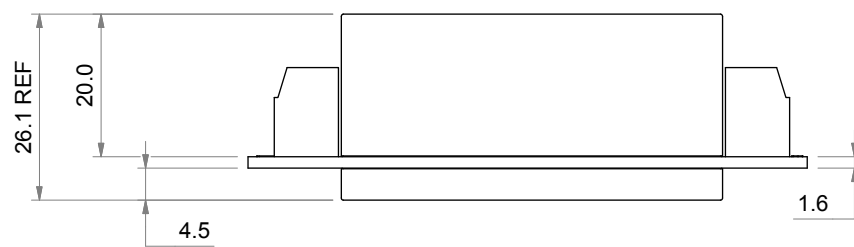
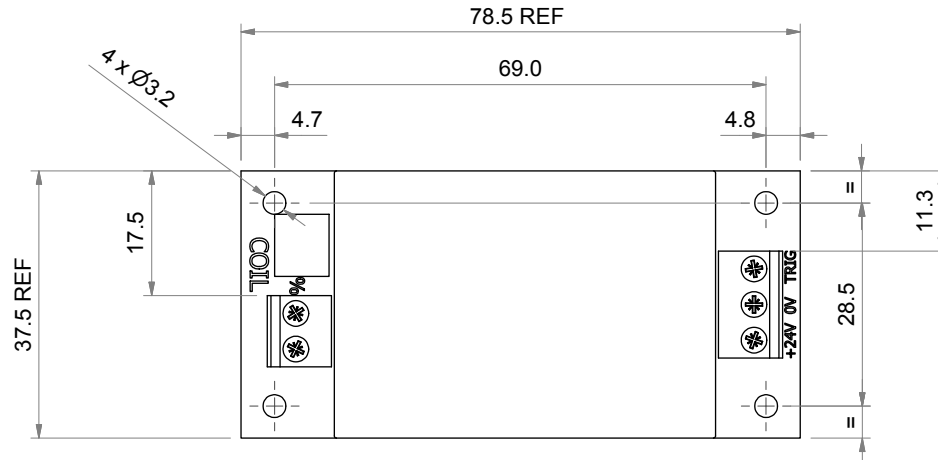


REVISION HISTORY		APPROVED	DATE
REV	DESCRIPTION		
A	SPEC DATA CLARIFIED - DRAWING No. CHANGED - Ref. MOD 0626		02/03/2015

It is the customer's responsibility to ensure that these devices are suitable for the application by testing in the worst-case conditions regarding function, environment and operating life and that there is no risk to persons, property, even if a device should fail.



SPECIFICATION

INPUT: 24V DC ±4V - FULLY STABILISED/SMOOTHED SUPPLY WITH A MAXIMUM RIPPLE OF ± 2%

OUTPUT: 24Vdc FOR APPROX 1 SECOND, THEREAFTER DROPPING TO 40% ±10% OF THE INPUT VOLTAGE.

TRIGGER VOLTAGE: 24Vdc

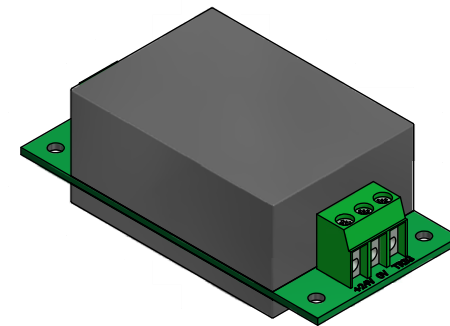
TRIGGER CURRENT: 10mA AT 24Vdc

CURRENT: 5A MAXIMUM (LOAD RESISTANCE 4.8 Ω)

Note : This is a PWM device and the actual steady-state output from the controller will depend upon the inductance of the device being driven and the type of power supply used.

ENVIRONMENT: CLEAN DRY ENVIRONMENT WITH A MINIMUM TEMPERATURE OF -5°C UP TO A MAXIMUM TEMPERATURE OF +35°C.

NOTE: THIS IS A 40% OVERVOLTAGE CONTROLLER, i.e. THE HOLDING VOLTAGE IS TURNED DOWN TO 40% OF THE SUPPLIED VOLTAGE. A LOWER VALUE OF SUPPLIED VOLTAGE IS TURNED DOWN BY THE SAME RATIO, AND WILL GIVE A CORRESPONDINGLY LOWER HOLDING VOLTAGE.



MSL STOCK NUMBER P0100886
WAS DRAWING No. EA1007-28 ISSUE B

THIS DESIGN AND PRINT IS COPYRIGHT AND IS THE PROPERTY OF MAGNET SCHULTZ LTD. IT MUST NOT BE COPIED NOR MUST ITS CONTENTS BE DIVULGED TO ANY THIRD PARTY WITHOUT PRIOR WRITTEN PERMISSION. ITS ACCEPTANCE FOR THE PURPOSES OF INFORMATION AND/OR QUOTATION SHALL IMPLY AN AGREEMENT ON THE PART OF THE RECIPIENT NOT TO USE IT FOR ANY OTHER PURPOSE AND TO OBSERVE THE FOREGOING CONDITIONS. THIS PRINT MUST BE RETURNED WHEN NO LONGER REQUIRED FOR THE PURPOSE FOR WHICH IT WAS SUPPLIED.

1. REMOVE ALL SHARP EDGES & BURRS
2. A RAD OR CHAMFER OF 0.3 MAX IS PERMITTED IN CORNERS OF BLIND HOLES RECESSES & STEPS

GENERAL TOLERANCES TO EN22768-1:1993, GEOMETRIC TOLERANCES TO EN22768-2:1993, UNLESS STATED OTHERWISE.
TOLERANCE CLASS: **- mK**

A3 THIRD ANGLE PROJECTION

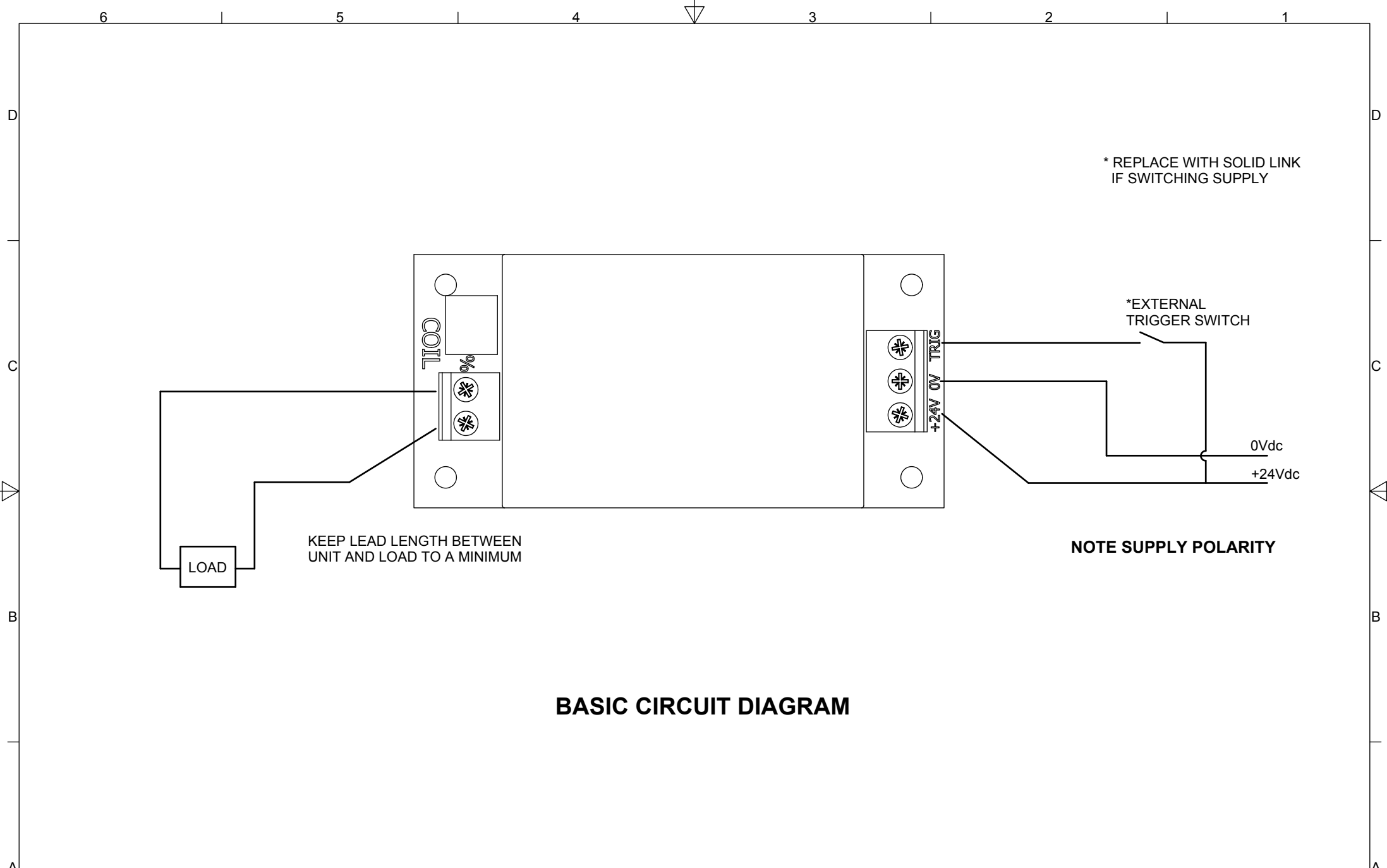
DIMENSIONS IN MM UNLESS STATED OTHERWISE.
DO NOT SCALE - IF IN DOUBT ASK

MAGNET SCHULTZ
MAGNET SCHULTZ Ltd
3-4 Capital Park, Old Woking,
Surrey GU22 9LD, England
Phone +44 (0)1483-794700 Fax -757298
Email: sales@magnetschultz.co.uk

Drawn: **RMS** Date: **09/11/2010** Checked: **RWK** Date: **09/11/2010**

Client: -
Description: **OVER VOLTAGE CONTROLLER OVDC**

Parameters: **1 Second, 40%**
SHEET 1 OF 2 SHEETS
Drg No. **P0100886** Issue **A**



BASIC CIRCUIT DIAGRAM

THIS DESIGN AND PRINT IS COPYRIGHT AND IS THE PROPERTY OF MAGNET SCHULTZ LTD. IT MUST NOT BE COPIED NOR MUST ITS CONTENTS BE DIVULGED TO ANY THIRD PARTY WITHOUT PRIOR WRITTEN PERMISSION. ITS ACCEPTANCE FOR THE PURPOSES OF INFORMATION AND/OR QUOTATION SHALL IMPLY AN AGREEMENT ON THE PART OF THE RECIPIENT NOT TO USE IT FOR ANY OTHER PURPOSE AND TO OBSERVE THE FOREGOING CONDITIONS. THIS PRINT MUST BE RETURNED WHEN NO LONGER REQUIRED FOR THE PURPOSE FOR WHICH IT WAS SUPPLIED.

1. REMOVE ALL SHARP EDGES & BURRS
2. A RAD OR CHAMFER OF 0.3 MAX IS PERMITTED IN CORNERS OF BLIND HOLES RECESSES & STEPS

GENERAL TOLERANCES TO EN22768-1:1993, GEOMETRIC TOLERANCES TO EN22768-2:1993, UNLESS STATED OTHERWISE.
 TOLERANCE CLASS:

A3 THIRD ANGLE PROJECTION

DIMENSIONS IN MM UNLESS STATED OTHERWISE.
DO NOT SCALE - IF IN DOUBT ASK

MAGNET SCHULTZ

MAGNET SCHULTZ Ltd
 3-4 Capital Park, Old Woking,
 Surrey GU22 9LD, England
 Phone +44 (0)1483-794700 Fax -757298
 Email: sales@magnetschultz.co.uk

Drawn	Date	Checked	Date
RMS	09/11/2010	RWK	09/11/2010

Client: -

Description: **OVER VOLTAGE CONTROLLER OVDC**

Parameters: **1 Second, 40%**

SHEET 2 OF 2 SHEETS

Drq No. **P0100886** Issue **A**